

# Incarceration Workgroup

## Review of the Impact of Transfer in Public Safety and Behavior Change and Best Practices in Residential Settings

September 16, 2019

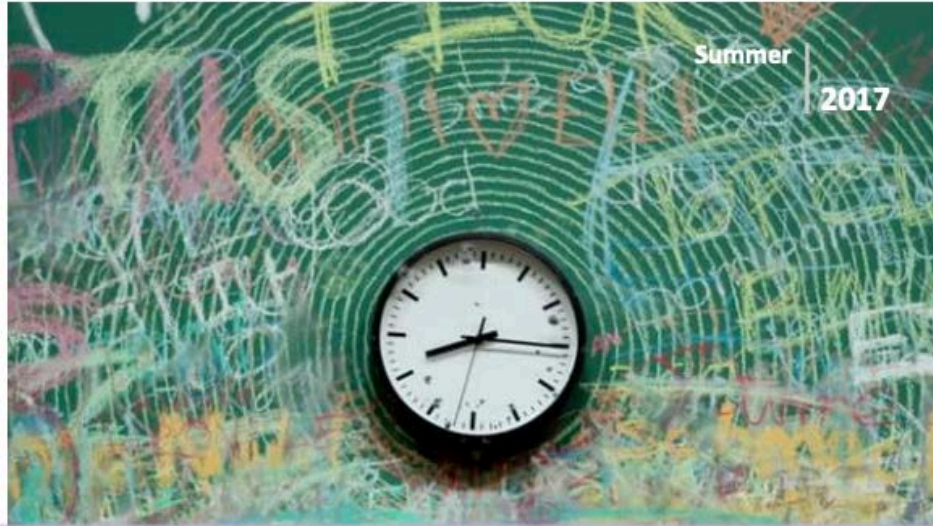
# Requirement

*Conduct a review of other states' laws regarding the transfer of juvenile cases to adult court and the outcomes associated with those laws, including their impact on public safety and their effectiveness in changing behavior . . . .*

# Leading Studies and Conclusions

- Robert Hahn, Ph.D. et al., *Effects on Violence of Laws and Policies Facilitating the Transfer of Youth from the Juvenile to the Adult Justice System*, Task Force on Community Preventive Services (2010).
- Richard E. Redding, *Juvenile Transfer Laws: An Effective Deterrent to Delinquency?*, United States Department of Justice, Office of Juvenile Justice and Delinquency Prevention (2010).
- Carol A. Schubert et al., *Predicting Outcomes for Youth Transferred to Adult Court*, Law and Human Behavior 34:460-475 (2010).
- Craig A. Mason, Ph.D. & Shau Chang, *Re-Arrest Rates Among Youth Sentenced in Adult Court*, Juvenile Sentencing Advocacy Project (2001).





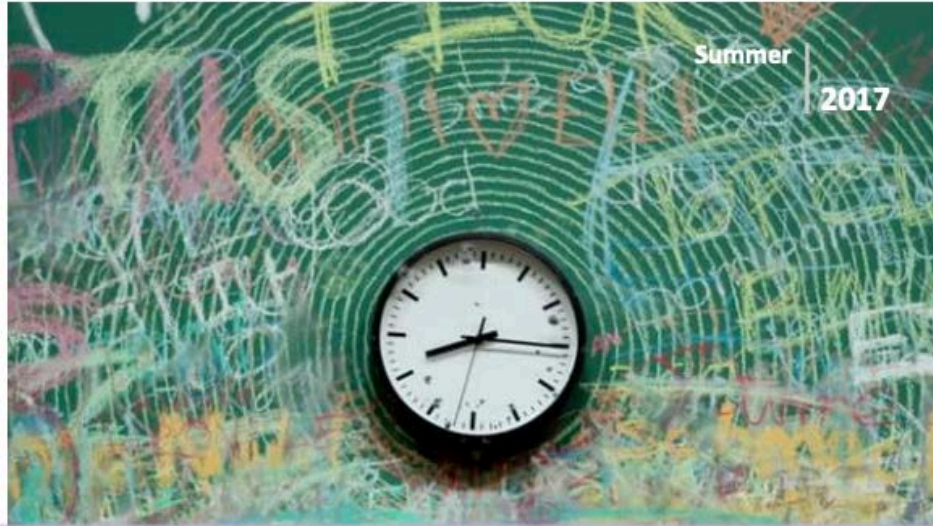
## Restorative Community Conferencing

A study of Community Works West's restorative justice youth diversion program in Alameda County



- ▶ **Reduced Criminalization:** During the first two years of the program, Community Works West's RCC program diverted 102 youth for crimes that would have otherwise been addressed through the juvenile justice system.
- ▶ **Lower Recidivism Rates:** Participating youth were 44 percent less likely to recidivate, compared to similarly situated probation youth.





## Restorative Community Conferencing

A study of Community Works West's restorative justice youth diversion program in Alameda County



- ▶ **Lower Recidivism Rates:** Participating youth were **44% less likely to recidivate**, compared to similarly situated probation youth.
- ▶ **Cost Savings:** RCC carries a one time cost of **\$4,500 per case**, while probation in Alameda County costs **\$23,000 per youth per year**.

# Requirement: Identify Best Practices

Behavior  
Management

Suicide Prevention  
and Intervention

Use of Room  
Confinement,  
Force, Restraints

Trauma-Informed  
Practices and  
Services

Sexual Misconduct  
Prevention,  
Detection,  
Response